

# MASKS MADE WITH LOVE

c/o The Quilted Canvas

Hand-made Machine Washable Cotton Face Mask



Supervised by Oliver the cat.



**Machine wash in warm to hot water and tumble dry.**

**Please note:** These masks are not a substitute for PPE.

There is no guarantee they will protect from the COVID-19 virus or other issues.

[katherine.dombrowski@thequiltedcanvas.com](mailto:katherine.dombrowski@thequiltedcanvas.com)



### Supply List:

1 piece of 11" X 9 " pre-washed, ironed 100% cotton tightly woven fabric (quilting cotton)

1 piece of 9" by 5" pre-washed, ironed 100% cotton muslin

1 piece of 7" X 5" fusible or sew-in lightweight interfacing

1- 6" plastic coated twist tie

Thread

Hand-sewing needle or sewing machine

2 - 7" pieces of 1/4 " elastic

2 - 6 inch pieces of iron on bias tape

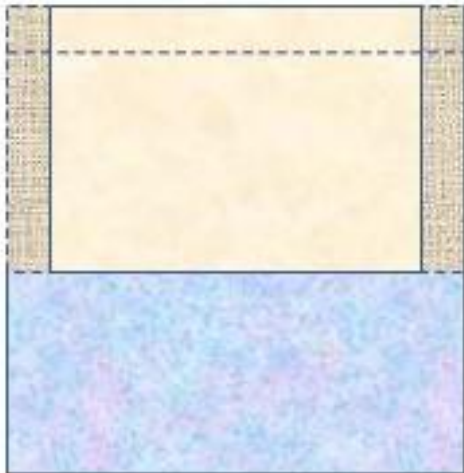
Note: If you are unable to find elastic in your local area, you may substitute with any lycra, two-way stretch type knit material (swim wear fabric, dance tight fabric cut in strips, legging/sporting knit fabric cut in strips)



Step 1: Iron or sew the interfacing on to the muslin

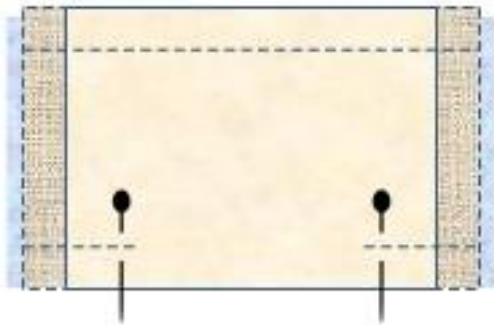


Step 2: With right sides together, sew a 5/8" seam on one of the 9" edges.

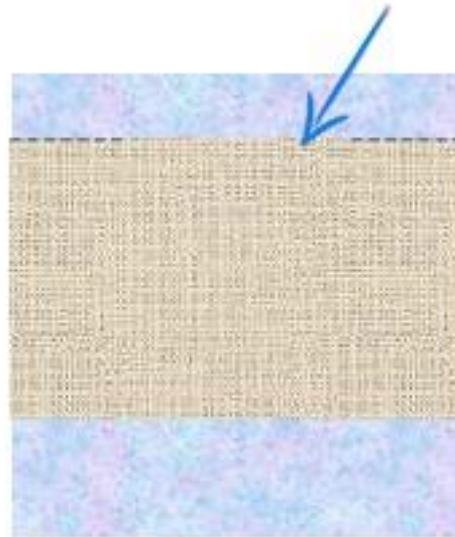


Step 3:

- Pin the other long edge of the muslin to the cotton fabric.
- Sew 2 1/2" in and back stitch or tie a knot if hand-sewing.
- Remove pins and press the top seam open.



This is the opening for an optional filter.



Step 4:

- Turn inside out and press.

Step 5:

- Sew a 1/4" seam at the top to form a casing for the twist tie.
- Insert the twist tie until it is centered in the middle of the casing.



Step 6:

- To create pleat lines, fold in half, bottom to top, press in a crease with a warm iron



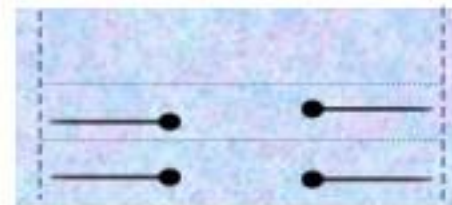
### Step 7:

- Fold in half again and press in a creases with a warm iron.
- You'll see three main crease lines.



### Step 8:

- Fold crease 1 up just below line 2
- Press with a warm iron
- Fold crease line 2 up just below line 3
- Stitch 1/4 inch on each side to hold pleats in place





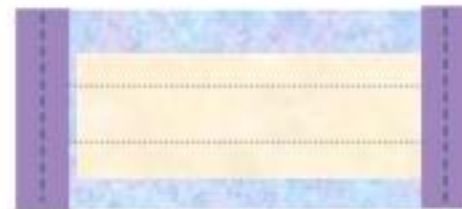
Step 7:

- Tack the stretchy ear loops on by hand sewing or machine sewing



Step 8:

- Using a warm iron, press the bias tape over the top of each side
- Turn over and press again
- Stitch down the sides of the bias tape (be careful to not catch your ear loops)





# Congratulations!

You just made your own washable, cotton face mask.

Perhaps you can make some for your family and friends, too.

Be sure to wash and dry after each use.

*Remember...it's cool to be covered.*



**MASKS MADE WITH LOVE**

c/o The Quilted Canvas

Hand-made Machine Washable Cotton Face Mask